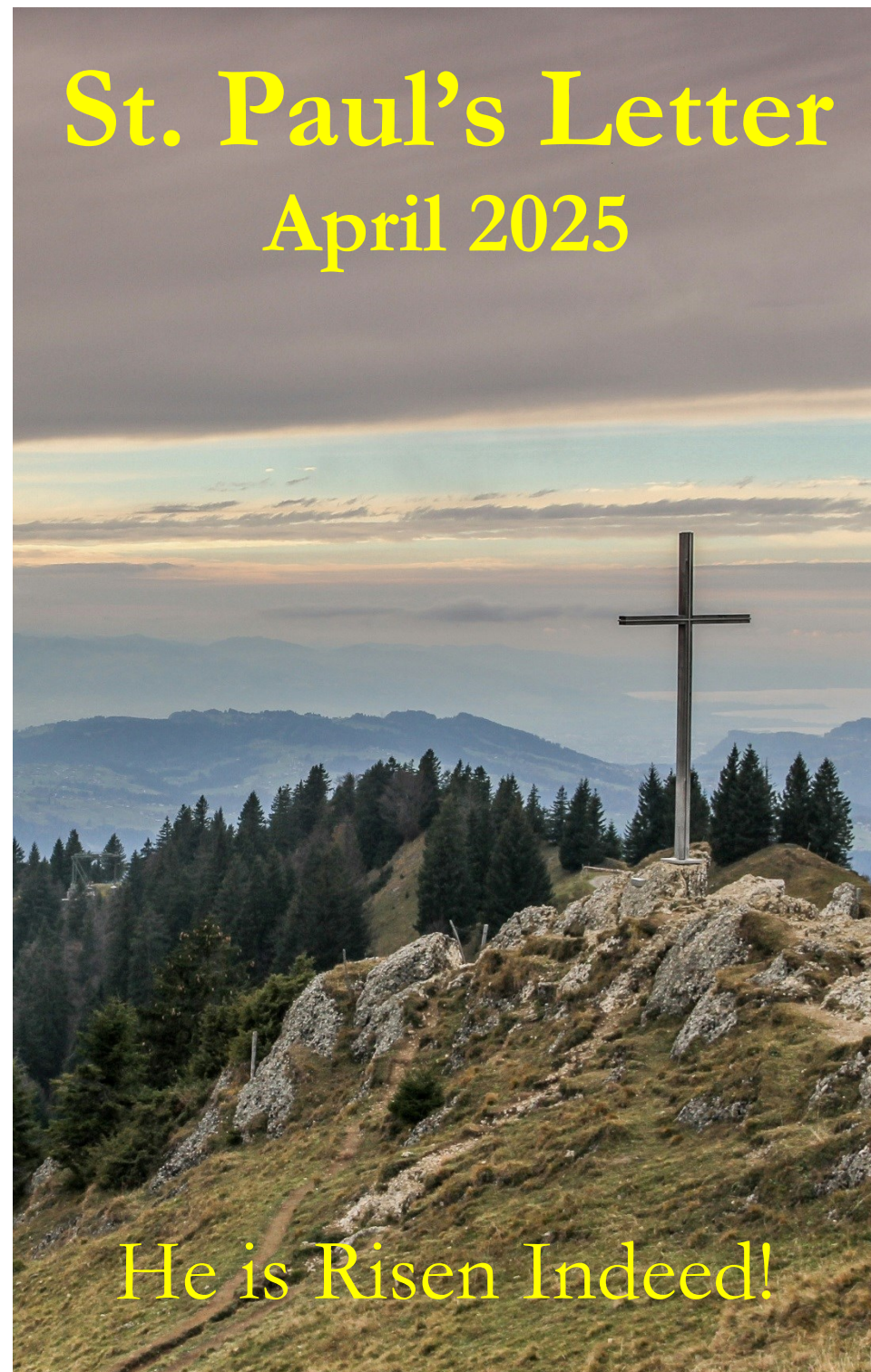


# St. Paul's Letter

## April 2025



He is Risen Indeed!



# St. Paul Lutheran Church

222 North George Street Millersville, Pennsylvania 17551

## CHURCH COUNCIL 2023-2024

### Committee Liaison

Rev. Mark Kopp, Pastor

—

Dave Ellenberg, Pres.

Mutual Ministry

Sylvia Lashley

Fellowship

David Sykes

???

Tim Brooks

???

Dee Perry

Worship & Music

Michele Carpenter\*

???

Bruce Hampton

Property

Sue Swartz

Children's Ministry

Linda Hiney

Finance

Mike Althouse,  
(non-voting)

Finance

Treasurer

\*Recording Secretary

### Other Contacts

Church office: 717-872-7392

Email: [office@stpaulmillersville.org](mailto:office@stpaulmillersville.org)

Website: [www.stpaullutheranmillersville.org](http://www.stpaullutheranmillersville.org)

**Sunday: 9:00 a.m.-Worship & Holy Communion**

## Our Staff

Preaching and Presiding Minister: Rev. Mark Kopp  
pastorkopp@stpaulmillersville.org

Pastor David Fisher: Pastor Emeritus

Dave Ellenberg: Church Council President

Lucy Esbenshade: Choir Director

Cathy Regitz: Sexton

Church Office Hours: M-F 8:00 a.m. to 12:00p.m.

Email: office@stpaulmillersville.org

# April Birthdays



**Don Martin 15<sup>th</sup>**

**Eleanor Ottolini 16<sup>th</sup>**

**Bernice Althouse 17<sup>th</sup>**

**Lauren Buchman 24<sup>th</sup>**

In a continuing effort of have our church database as accurate as possible, birthday data is being addressed. PLEASE, if your April birthday is missing from this list, let the office know as soon as possible. Thank you.

# Helping Hands

<b>April</b>	<b>6</b>	<b>13</b>	<b>20</b>	<b>27</b>	
<b>Bulletins</b>	NONE	NONE	Sherry Symonds	NONE	
<b>Sunday School</b>	No One	Linda Hampton	No SS Easter	Karen Napier	
<b>Flowers Vase 1</b>	No flowers in Lent	No flowers in Lent	Dee Perry	Mary & Cy Fritz	
<b>Flowers Vase 2</b>	No flowers in Lent	No flowers in Lent	Sandy Miller	Lois & John Detz	
<b>Usher 1</b>	JoAnn Harris	Sylvia Lashley	Mike Althouse	Polly Irwin	
<b>Usher 2</b>	Dave Harris	Greg Lashley	Gail Miller	Scott Irwin	
<b>Usher 3</b>	Karen Napier	Mason Kahler	Suzanne Herr	Lauren Buchmann	
<b>Usher 4</b>	Anita Roma	Dan Kahler	Denny Herr	Pat Heffner	
<b>Altar Guild 1</b>	Sue Ellenberg	Sue Ellenberg	Sue Ellenberg	Sue Ellenberg	
<b>Altar Guild 2</b>	TBD	TBD	TBD	TBD	
<b>Lector</b>	Karen Napier	Frank Witmer	Linda Hiney	Suzanne Herr	
<b>Lay Assistant</b>	Tim Brooks	Jim Bernheisel	Holly Freas-Webster	Jim Dierolf	

## Bev's Bakers



### April

- 6 Lauren Buchman
- 13 Holly Freas-Webster
- 20 Ria Van Aulen
- 27 None needed (Cake)



## Finance, Finance, Finance

### February Update:

Giving Income	\$ 10,847
Other Income	\$ 1,891
Expenses	\$ 19,170
Net Income/ <b>deficit</b>	\$ (6,431)



## April Worship

- 2 Mid-week Lenten Vespers 7:00pm
- 6 Fifth Sunday of Lent worship 9:00am
- 9 Mid-week Lenten Vespers 7:00pm
- 13 Palm Sunday worship 9:00am
- 17 Maundy Thursday service 7:00pm
- 18 Good Friday service 7:00pm
- 19 Easter Vigil (Grace Lutheran, Lancaster) 6:00pm
- 20 Resurrection of Our Lord service 9:00am
- 27 Second Sunday of Easter 9:00am

## Sub Sale

SUB SALE PICKUP IS APRIL 8th at 4pm



***Come to the meetings, stay for the fun!***

### April Events

April 12th King of Kings (animated) movie 12:40pm

April 20th Easter Sunday Brunch after the service

April 20th Egg hunt for the children. Bring the grandkids!

April 27th Volunteer Appreciation recognition social after church.

**Please check for signup sheets for these and other events.**

**Events where tickets are required are "Pay in Advance".**

**Please use the provided envelopes.**

## Handle With Care

Our worship folders are important to us and are used for multiple weeks whenever possible. Please refrain from bending, folding, or mutilating them and make sure they get back to the basket for next time. ALSO, the same is true for the lessons and the bulletins...they have another use after the service. Inserts such as the Healing Service are also recycled for next time.

(Apologies if anyone finds this material offensive)

# Summer Camp Open House



**Summer Camp  
Open House at  
Kirchenwald &  
Nawakwa**

**Come join us!!!**

- Meet some of the Summer Camp Staff
- Take a tour of camp
- \$10 gift certificate for the camp store to every brand new camper!!

**Sunday, March 16**

**Sunday, April 6**

**2:00-4:30 pm**



**Kirchenwald** is located on 340 acres of undeveloped timberland, adjacent to 4000 acres of State Game Lands, in Lebanon, Pennsylvania.

**Nawakwa** is located on 336 acres outside of Arendtsville, in Adams County, Pennsylvania.

For more information, visit [www.LutheranCamping.org](http://www.LutheranCamping.org) or call the Camping Office at 717-677-8211.

## March 9th-Girl Scout Sunday



Present were scouts from Daisy Troop 70304 and Brownie troop 71523 who served as greeters and ushers. The readers for that day were from Girl Scout Troop 70416: Paige Redding and Presley Singleton. Greeters are Cianna Jones, Omileyka Montes, and Charlotte Cruz. Also participating was Elaina Van Aulen - a Juliette Scout.



Our own Karen Napier, a life long Girl Scout/Leader was there to guide and support the young ladies who read the lessons.

The Girl Scouts also served as ushers during the service.





## Yes, There were Cookies

The girls were selling Girl Scout cookies after the service. In addition, there had samples and punch available for our after church fellowship. Sue Swartz and Sandy Miller seen here stocking up for the year.



Below is everyone I could gather for a picture. In the row in front of Karen, on the far left, is Louise, and on the far right is Linda. They are an incredible organizational team for the girls and have been serving for many years.



## Interested?



Do you remember when we had a handbell choir that stretched all the way across the balcony? Lucy does. She is asking if there are members interested in putting together a new bell choir. It does not have to be huge, 5 or 6 people can easily handle an octave of bells (a little more even). Playing bells is not difficult. If you cannot read music, that's ok too, you can learn easily. Out of the 88 notes on the piano, you only need to learn to recognize 2 or 3 notes! If you are interested, contact Lucy Esbenshade. She is planning on rehearsals on Sunday after church...so no one has to make an extra trip to church and it's not at night...so, no night driving.



## Help Wanted

**Pastor Kopp** wanted to make sure that everyone knew that the role of the Cantor, leading the congregation in the Kyrie and Psalm, is open to anyone who wishes to do so. If you are interested in participating in the service in this way, please let Bill know. It is not difficult and you will have the psalm ahead of time to practice. Bill will even help you if you are unsure. Get involved! Make a joyful noise! Also, you do not have to sing from the balcony, you may do so from your seat! Could it be any easier?



(Apologies if anyone finds this material offensive)

## Our Friends from Haiti

Stevie and Zacharie Estime will be visiting us on April 27th to share with us the status of their mission in Haiti. We will be taking up a “noisy collection” for their orphanage/school. It is also ok if your donation is in the form of a check or cash; it does not have to be noisy.



Donate Here

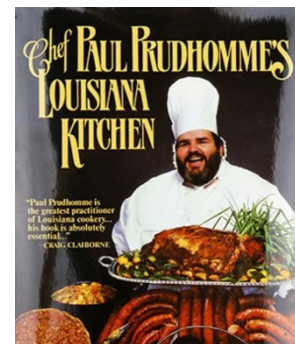


Pedline, Katheline, and Asmalie ready for school.

## About Creole

Creole is not a specific language but a language that develops from a pidgin, which is a grammatically simplified form of a language used for communication between people not sharing a common language. Creole languages emerge when a pidgin is adopted as a first language by the children of those speaking it. Eventually, it becomes the native language and continues to develop grammar and vocabulary. Zacharie speaks Haitian Creole, which is French-based with influences from west African languages. Within our country, these creole languages exist: Gullah, an English-based creole spoken on the Sea Islands of the southeastern United States, and Louisiana Creole, a French-based creole spoken in Louisiana.

You can't mention the word “creole” without thinking about food. Creole cuisine, originating in New Orleans, is a unique culinary tradition from Louisiana characterized by a fusion of French, Spanish, African, and Native American flavors and techniques, often featuring fresh seafood, rice, and spicy seasonings. Cajun cuisine, rooted in the Acadian region of southwest Louisiana, is known for its hearty, meat-heavy, and often spicy dishes.



## New Life Mission—Haiti

### Come join us for our very first Bingo Fundraiser!

Saturday, April 12, 2025 at New Holland Fire Rescue Station 1 from 2-5pm. Presale tickets are \$20 for 20 games (3 cards per game) and \$25 at the door. To purchase tickets call or text Stevie 717-617-9652.

Extra books, special game cards and concessions will be available for purchase. We are also looking for sponsors for the event. If you or your business would be willing to be an event sponsor or would like to donate a bingo prize we would greatly appreciate it.



**When:** April 12th 2-5pm

**Where:** Garden Spot Fire Station  
339 E Main St. New Holland

**Price:** Presale tickets are \$20 for 20 games (3 cards per game) and \$25 at the door. To purchase tickets call or text Stevie 717.617.9652

Extra books, special game cards, and concessions will be available for purchase.



Visit our website for more info.  
[NewLifeMissionHaiti.com](http://NewLifeMissionHaiti.com)



Thank you for kind consideration,  
Zacharie & Stevana Estime  
New Life Mission – Haiti, Inc. Directors.



## Treasurer's Tip

It's tax time. If you have an IRA retirement account, you can make tax-free distributions to St Paul. There are some restrictions. The distribution must come directly from your account institution to St Paul. Talk to your financial planner and IRA account institution. Here is information from the IRA web site:



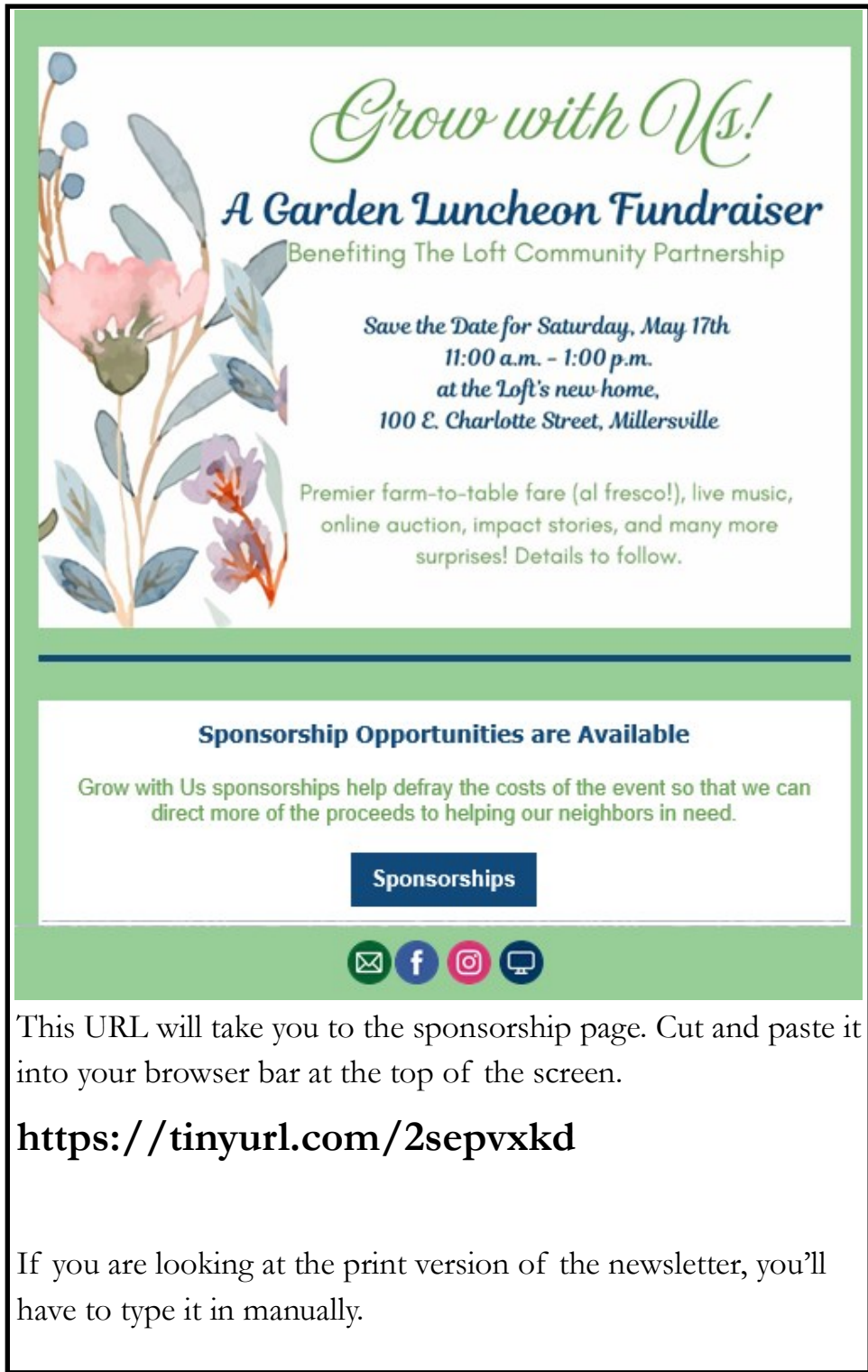
“The Internal Revenue Service reminds individual retirement arrangement (IRA) owners age 70½ and older that they can make up to \$105,000 in tax-free charitable donations during 2024 through qualified charitable distributions. That’s up from \$100,000 in past years.

For those age 73 or older, qualified charitable distributions (QCDs) also count toward the year's required minimum distribution (RMD).

Generally, IRA distributions are taxable, but QCDs remain tax-free if sent directly to a qualified charity by the trustee. To make a QCD for 2024, IRA owners should contact their IRA trustee soon to ensure the transaction completes by year-end.

Each eligible IRA owner can exclude up to \$105,000 in QCDs from taxable income. Married couples, if both meet qualifications and have separate IRAs, can donate up to \$210,000 combined. QCDs don’t require itemizing deductions.

For those planning ahead, starting this year, the QCD limit is subject to annual adjustment, based on inflation. For that reason, the annual QCD limit will rise to \$108,000 in 2025.”



*Grow with Us!*  
**A Garden Luncheon Fundraiser**  
Benefiting The Loft Community Partnership





Save the Date for Saturday, May 17th  
11:00 a.m. - 1:00 p.m.  
at the Loft's new home,  
100 E. Charlotte Street, Millersville

Premier farm-to-table fare (al fresco!), live music,  
online auction, impact stories, and many more  
surprises! Details to follow.

**Sponsorship Opportunities are Available**

Grow with Us sponsorships help defray the costs of the event so that we can  
direct more of the proceeds to helping our neighbors in need.

[Sponsorships](#)

This URL will take you to the sponsorship page. Cut and paste it into your browser bar at the top of the screen.

**<https://tinyurl.com/2sepvxkd>**

If you are looking at the print version of the newsletter, you'll have to type it in manually.

## Meals on Wheels

The public is invited to help support Millersville Area Meals on Wheels (MAMOW) by attending its All-You-Can-Eat Annual Pancake Breakfast, from 7:30 to 11 a.m., Saturday, April 26, at St. Philip the Apostle Catholic Church. The menu includes pancakes, scrambled eggs, sausage, hash browns, fruit cup and beverages. Cost is \$12 for adults; \$6 ages six to twelve; and free to children ages five and under. **APRIL 26th**



## Annual Plant Sale Coming



Spring is here and so is the annual flower sale. (which includes herbs and vegetables too) This year, pick up will be on Friday, May, 9<sup>th</sup>. Stock up for Mothers' Day! Start planning your gardens today! As always, the benefits from this will go to support our ministry to the Haitian orphanage.

## Mothers' Day Brunch

**Again this year, Fellowship Committee is organizing a brunch on Mothers' day immediately following the service. Yes, there is a signup sheet in the narthex. Be sure to check it out.**



# Fellowship Outing at Stoner's Grill

Kopps,  
Harris,  
Carol &  
Sherry  
Symonds.



The Herrs

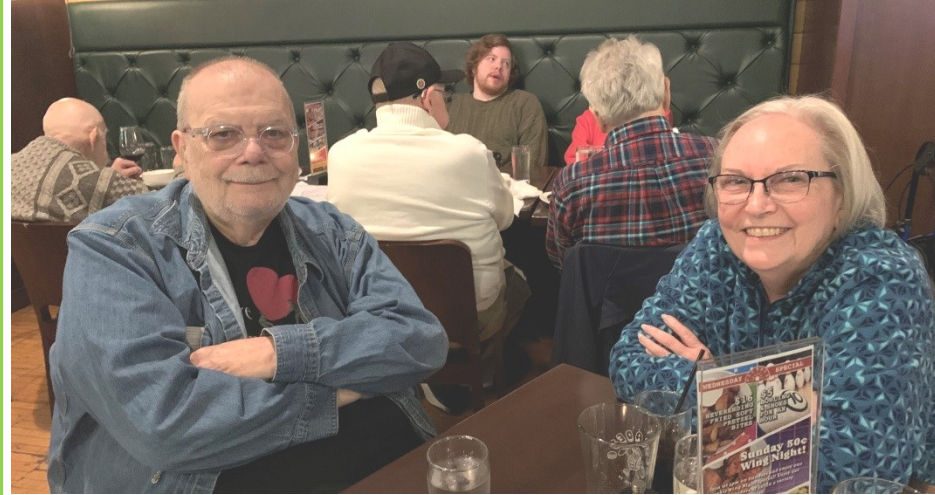
The Dierolfs





## Fellowship Outing at Decades

Ralph and Linda Hiney...but if you look at the table in the back, you'll see Ken Hoak, Bill Engle, Sharon is behind Bruce Thens, And the Engle's grandson Colin.



Carol Symonds, Lori Dierolf and Sherry Symonds



Ken, Bill, Bruce, Colin, & Sharon



*Photography by Sylvia*

## Fellowship Outing at Decades

Karen, Bill Keri and Pr. Kopp



**Also present but not pictured were camera shy  
Sylvia and Greg Lashley.**

## Pictorial Directory Update

A while back, Bill began the task of taking pictures for a new pictorial directory. Things were going ok, but not great. Bill realized that his camera was a bit dated and pictures were a little dark, but that could be corrected, sort of. However, two problems arose. First, getting members to have their pictures taken was becoming difficult and started to require more and more “badgering” from Bill. And second, knowing who exactly was missing became a problem. This required Bill to look closely at the church database to determine who was missing.

Bill discovered that there were some 800+ active and inactive members on the rolls. Knowing that it had been a long time since we’ve had even 600 people here on a Sunday, some-

## Pictorial Directory Update

thing had to be done. So, thus began the arduous task of making the database accurate. Several members were asked to look at the list of long-gone “members”, many of whom were deceased, and to suggest who should be removed from the database. Much effort was made to ensure no one was removed who shouldn't have been. The call committee responsible for bringing Pr. Kopp here had also done significant work in this area, however, their work was never reflected in the database. Church council was presented with the list of deletions and it was approved.

We now have a database that should be fairly accurate in terms of membership. However, there are many, many bits of information missing such as wedding dates, baptism dates, birthdays, and more! It is hoped that much of this information may be entered into the database as we begin to start taking pictures again. Yes, there will be a form that will enable everyone to check their information and to fill in what is missing.

Bill has purchased a new camera and lighting equipment so that the best result may be achieved without having to pay for a professional photographer. The picture “studio” will be the small Sunday school room in the hall by the elevator. The small conference room was often too narrow for our purposes.

Thank you for your cooperation with this monumental task.

(Apologies if anyone finds this material offensive)

## Remember Family Members in Your Prayers

Gail Gilday  
Marilyn Homsher  
Ann Nagle  
Mary Ann Oren  
Marion Trimble  
Peggy Bruce  
Kay Cherry  
Patty & Barry Leed  
Eleanor Ottolini  
Charles Scharnberger  
Nancy Eberle  
Peg Siglin

Shirley & Howard Shuffelbottom  
Ruth Derby  
Louise & Bob Diamond

*Please contact the  
office if you would  
like to add some-  
one to this list.*



**St. Paul Lutheran Church 222 North George Street  
Millersville, Pennsylvania 717-872-7392**

The Rev. Mark S. Kopp, Pastor

Our mission statement:

**Called through the gospel of Jesus Christ, St. Paul Lutheran  
Church seeks to hear and heed Christ's call to discipleship  
through worship, learning, and serving the Millersville  
Community with the love of God.**